

Observers: CU & AT

Center for Snow and Avalanche Studies

Profile # 1

Time: 1630

Snowpack Profile

Date: 3/16/12

Location: Grand Mesa

Elev. 10,630' Aspect: NNE

Boot Pen: 7 cm \angle : 2°

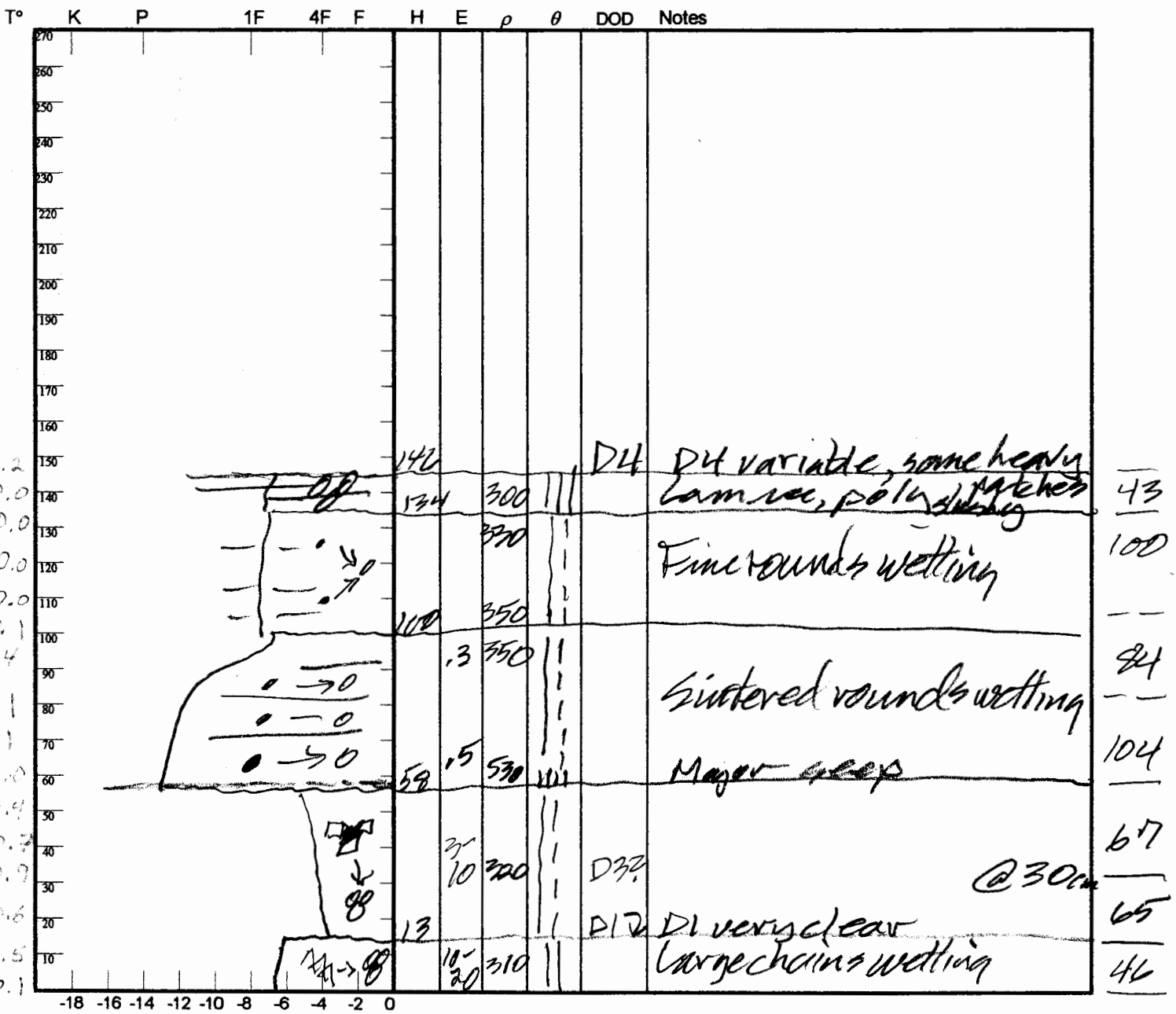
Air T: +5 °C Sky: 0

Precip: Nil Wind: 24

Prior Pit: # 1; 1; 1

Total Snowpack SWE: 509 mm H₂O

Notes: 457 = 1.47m; $\bar{\rho} = 346 \text{ kg/m}^3$



| Potential Slab | | | Weak Layer & Bed Surface | | | | | | |
|----------------|---|---|--------------------------|---|-----------------|---|---|----|---------------|
| Ref | $H_{2O_{Nor}} \div H_{Nor} = \rho_{kg}$ | $\sin \angle \times H_{Nor} \times \rho \times 9.8 = \tau_{Slab}$ | F | E | T _{WL} | S | C | RB | Shear Quality |
| A | mm ÷ m = | x x x 9.8 = | | | | | | | |
| B | mm ÷ m = | x x x 9.8 = | | | | | | | |

Notes: 457 = 147 ; 2 = 161 ; 3 = 122 ; 4 = 134 ; 5 = 140 ; 6 = 126