

Observers: CLYAT

CODOS Snowpack Profile

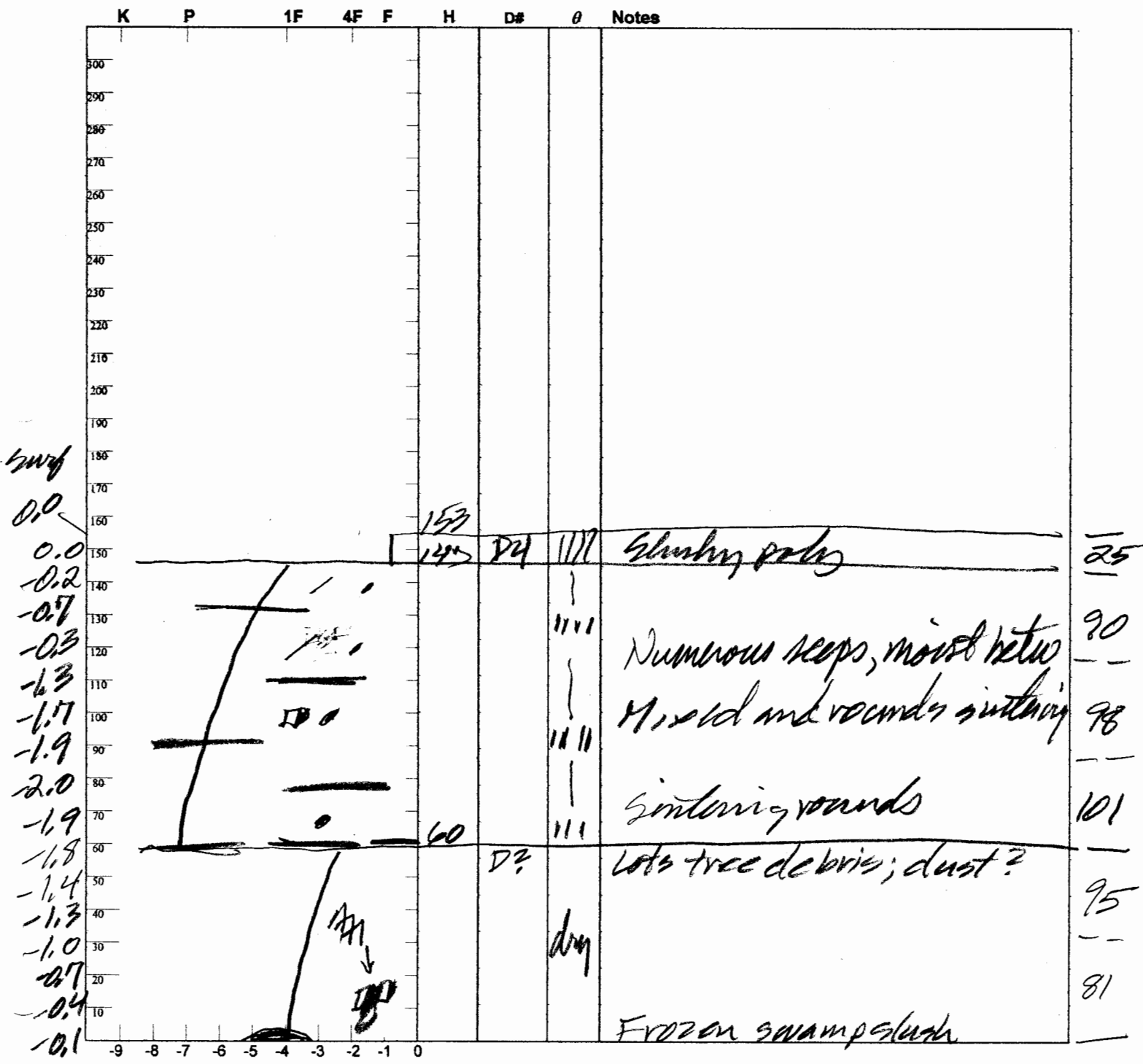
Date: 3/15/12

Location: Rabbit Ears Pass Elev. 9,400' Aspect: WNW Boot Pen: 0 cm \angle : 3° Time: 11:40 MDT

Prior Obs: -1-1- Air T: +8 °C Sky: 0 Precip: Nil Wind: Nil Notes: SWE = 490mm

H₂O = 1.52m; $\rho = 922 \text{ kg/m}^3$

Surface is suncupping, filling, and shows small penitente features typical of dust in new snow



T = -1.0