

Observers: CB, AT, KE

Center for Snow and Avalanche Studies

Profile # 11

Time: 0915

Snowpack Profile

Date: 4/8/12

Location: SASP

Elev. 11,060' Aspect: NE

Boot Pen: 1 cm \angle : 3°

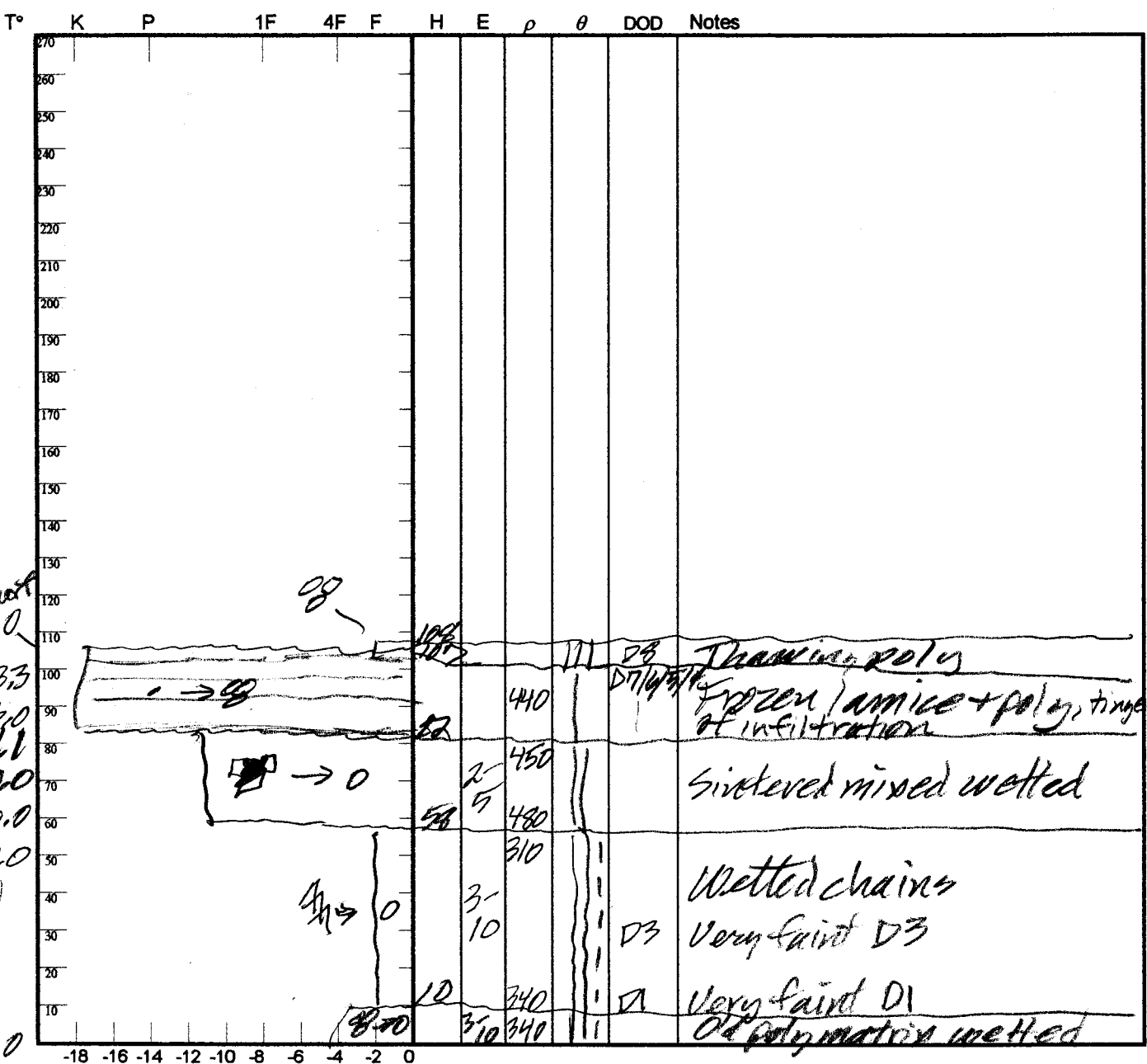
Air T: 16 °C Sky: ☉

Precip: Nil Wind: Nil

Prior Pit: # 9; 4/2/11

Total Snowpack SWE: 433 mm H₂O

Notes: H₂O = 1.15 m, $\rho = 377$ kg/m³



Potential Slab				Weak Layer & Bed Surface						
Ref	$H_{2O_{Nor}} \div H_{Nor} = \rho_{kg}$	$\sin \angle \times H_{Nor} \times \rho \times 9.8 = T_{Slab}$		F	E	T _{WL}	S	C	RB	Shear Quality
A	mm ÷ m =	X X X 9.8 =								
B	mm ÷ m =	X X X 9.8 =								

Notes: