

Observers: CUAAT

Center for Snow and Avalanche Studies

Profile # 12

Time: 0915 MST

Snowpack Profile

Date: 4/22/13

Location: GASP

Elev. 11,000

Aspect: NE

Boot Pen: 8 cm

$\angle$ : 3 °

Air T: 45 °C

Sky: ⊙

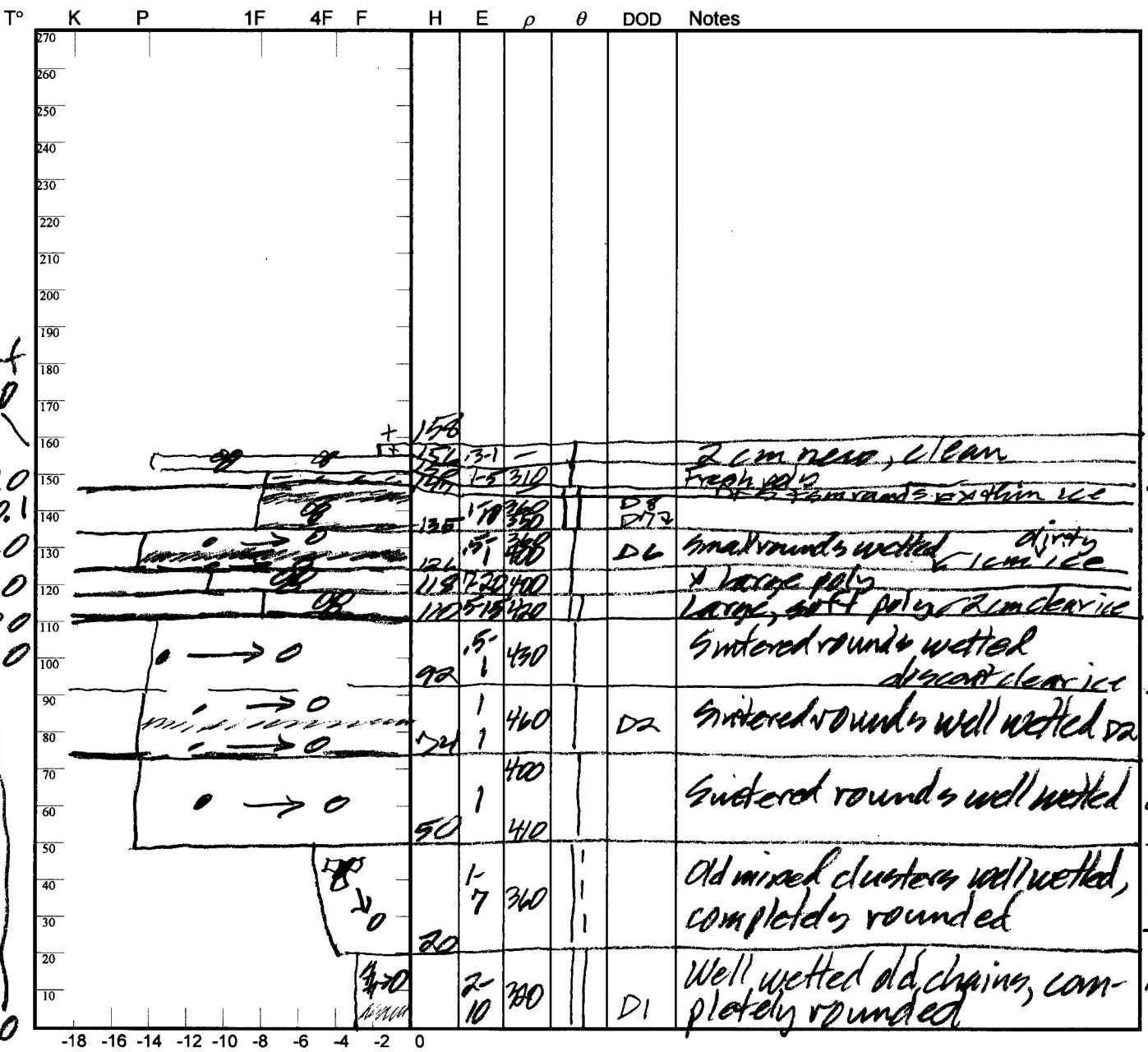
Precip: Nil

Wind: LT

Prior Pit: # 11; 4/16/13

Total Snowpack SWE: 624 mm H<sub>2</sub>O

Notes: H<sub>2</sub>O = 1.56 m;  $\rho$  = 395 kg/m<sup>3</sup>



Surf 0.0  
 0.0  
 -0.1  
 0.0  
 0.0  
 0.0  
 0.0  
 0.0

4 SWE  
 2  
 24  
 31  
 41  
 77  
 76  
 39  
 48  
 95  
 86  
 105

Potential Slab			Weak Layer & Bed Surface						
Ref	$H_{2O_{Nor}} \div H_{Nor} = \rho_{kg}$	$\sin \angle \times H_{Nor} \times \rho \times 9.8 = \tau_{Slab}$	F	E	TWL	S	C	RB	Shear Quality
A	mm ÷ m =	X X X 9.8 =							
B	mm ÷ m =	X X X 9.8 =							

Notes: