

Observers: U, AT

Center for Snow and Avalanche Studies

Profile # 13

Time: 0830

Snowpack Profile

Date: 4/23/12

Location: SOSP

Elev. 12,186' Aspect: NE

Boot Pen: 1 cm \angle : 3 °

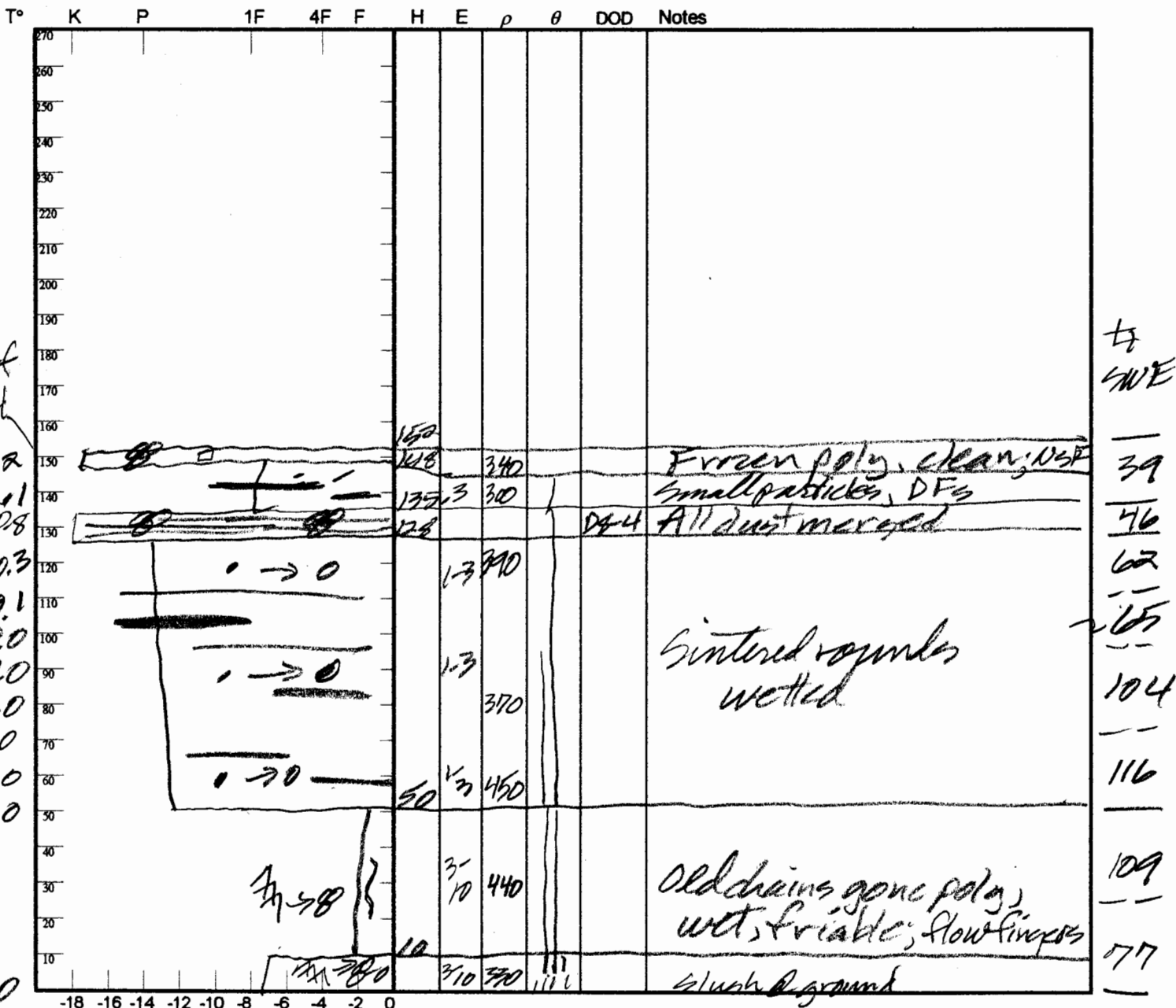
Air T: +9 °C Sky: 0

Precip: Nil Wind: Nil

Prior Pit: # 10; 4/7/12

Total Snowpack SWE: 418 mm H₂O

Notes: HS τ = 1.50 ; $\bar{\rho}$ = 412 kg/m³



Potential Slab				Weak Layer & Bed Surface						
Ref	$H_{2ONor} \div H_{Nor} = \rho_{kg}$	$\sin \angle \times H_{Nor} \times \rho \times 9.8 = T_{slab}$		F	E	T _{WL}	S	C	RB	Shear Quality
A	mm \div m =	X X X 9.8 =								
B	mm \div m =	X X X 9.8 =								

Notes: