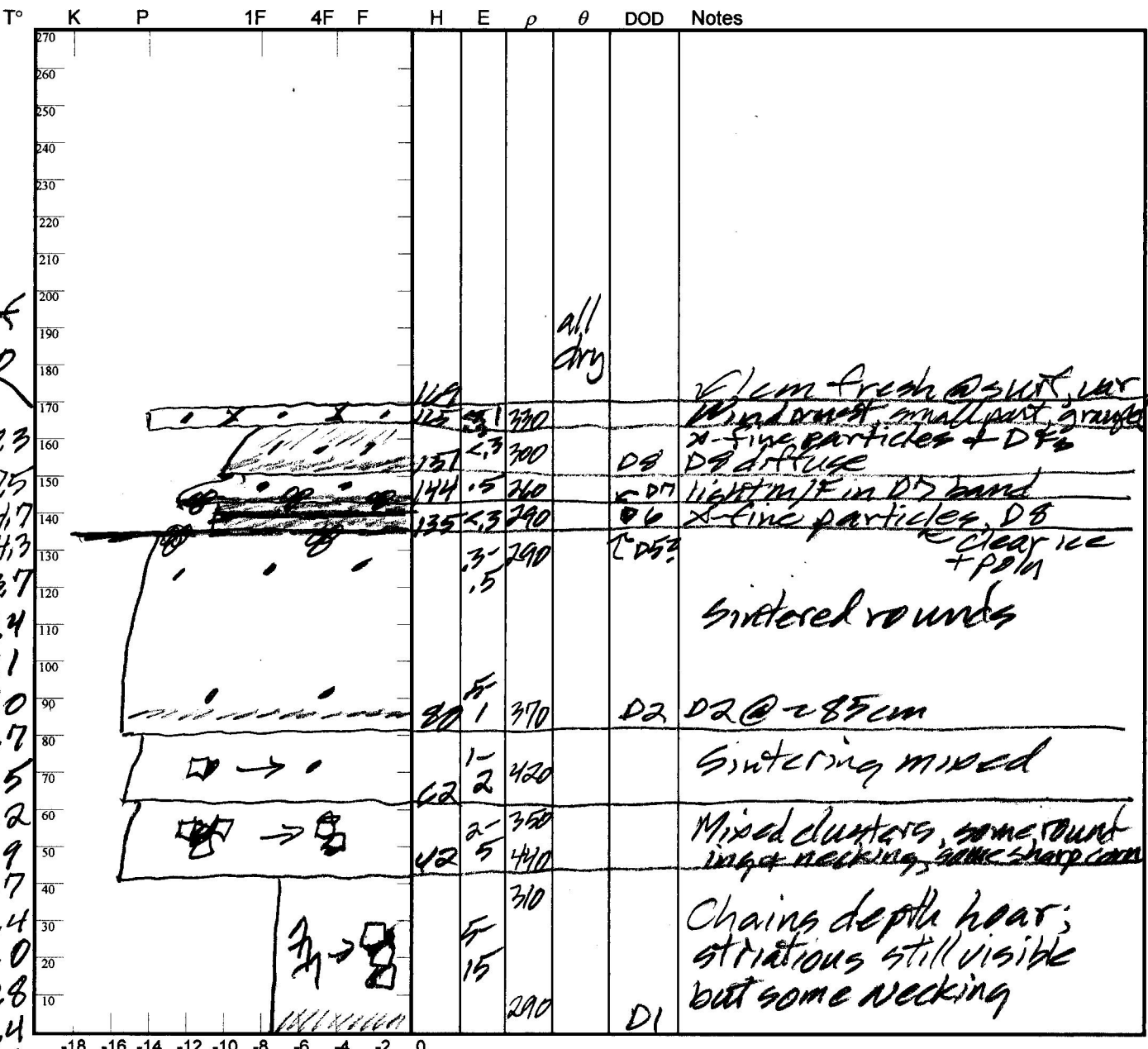


Observers: UAT Center for Snow and Avalanche Studies Profile # 13  
 Time: 0845 MST Snowpack Profile Date: 4/24/13  
 Location: SBCP Elev. 12,140 Aspect: NE Boot Pen: 10 cm  $\angle$ : 3 °  
 Air T: 2 °C Sky: 0 Precip: Nil Wind: Nil Prior Pit: # 9; 4/3/13  
 Total Snowpack SWE: 589 mm H<sub>2</sub>O Notes: H<sub>2</sub>O = 1.48 m;  $\rho = 350$  kg/m<sup>3</sup>  
mean  $T = -3.40$  C



SWT  
 16.0  
 10.3  
 7.5  
 4.7  
 4.3  
 3.7  
 3.4  
 3.1  
 3.0  
 2.7  
 2.5  
 2.2  
 1.9  
 1.7  
 1.4  
 1.0  
 0.8  
 0.4  
 0.2

77  
 76  
 38  
 41  
 83  
 91  
 50  
 77  
 82  
 70  
 56

Potential Slab			Weak Layer & Bed Surface						
Ref	$H_2O_{Nor} \div H_{Nor} = \rho_{kg}$	$\sin \angle \times H_{Nor} \times \rho \times 9.8 = \tau_{Slab}$	F	E	T <sub>WL</sub>	S	C	RB	Shear Quality
A	mm $\div$ m =	X X X 9.8 =							
B	mm $\div$ m =	X X X 9.8 =							

Notes: