

Observers: 0750 MST Center for Snow and Avalanche Studies

Profile # 14

Time: 06 + AT

Snowpack Profile

Date: 4/30/13

Location: GASP

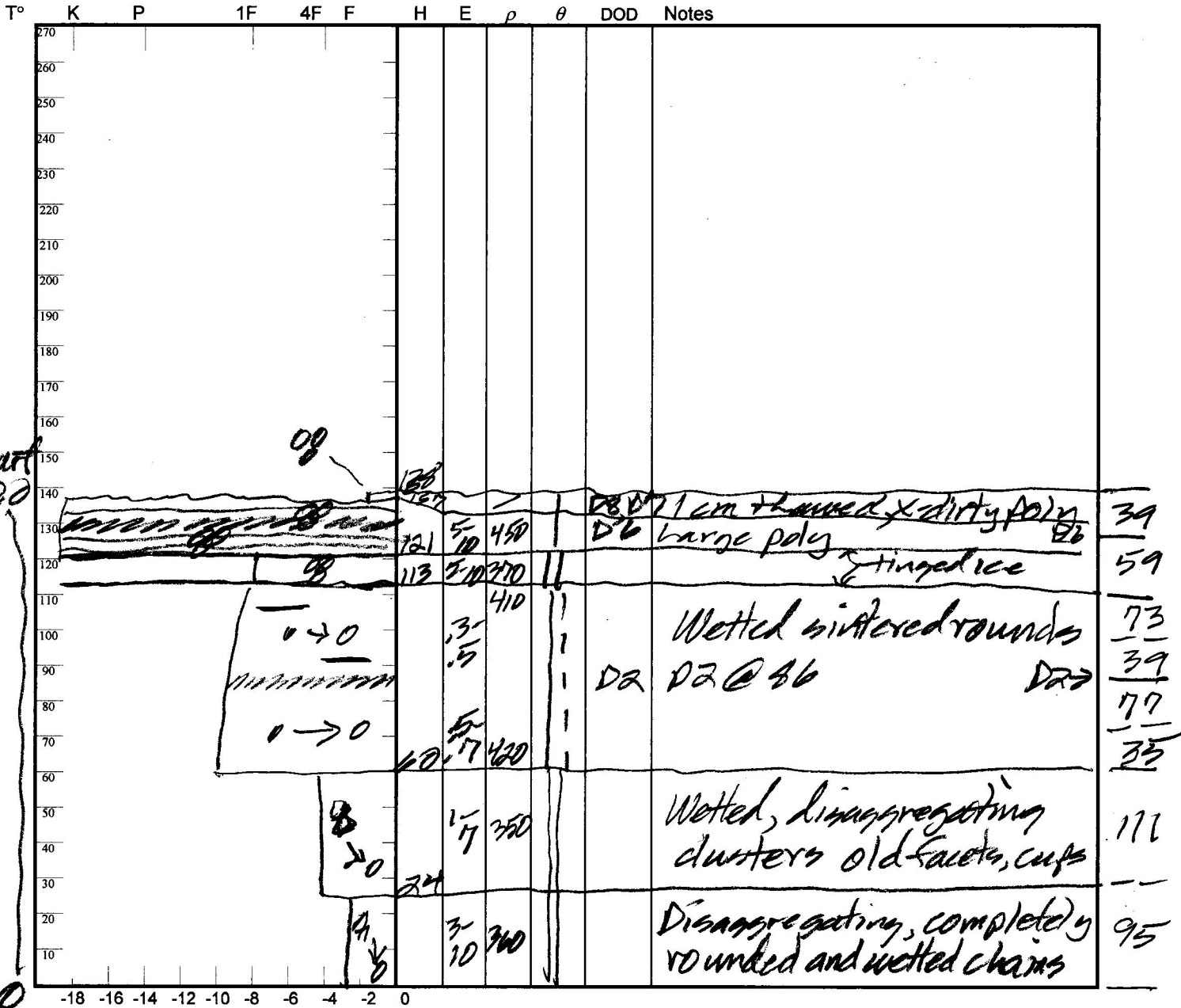
Elev. 11,000' Aspect: N/E Boot Pen: 1 cm \angle : 30

Air T: +9 °C Sky: 0

Precip: Nil Wind: LT Prior Pit: # 12; 4/23/13

Total Snowpack SWE: 528 mm H₂O

Notes: H₂O = 1,39; ρ = 380 kg/m³



Potential Slab			Weak Layer & Bed Surface						
Ref	$H_2O_{Nor} \div H_{Nor} = \rho_{kg}$	$\sin \angle \times H_{Nor} \times \rho \times 9.8 = \tau_{Slab}$	F	E	T _{WL}	S	C	RB	Shear Quality
A	mm ÷ m =	X X X 9.8 =							
B	mm ÷ m =	X X X 9.8 =							

Notes: