

Observers: CHAT
 Time: 1030 MST
 Location: S BGP
 Air T: 0 °C
 Total Snowpack SWE: 577 mm H₂O

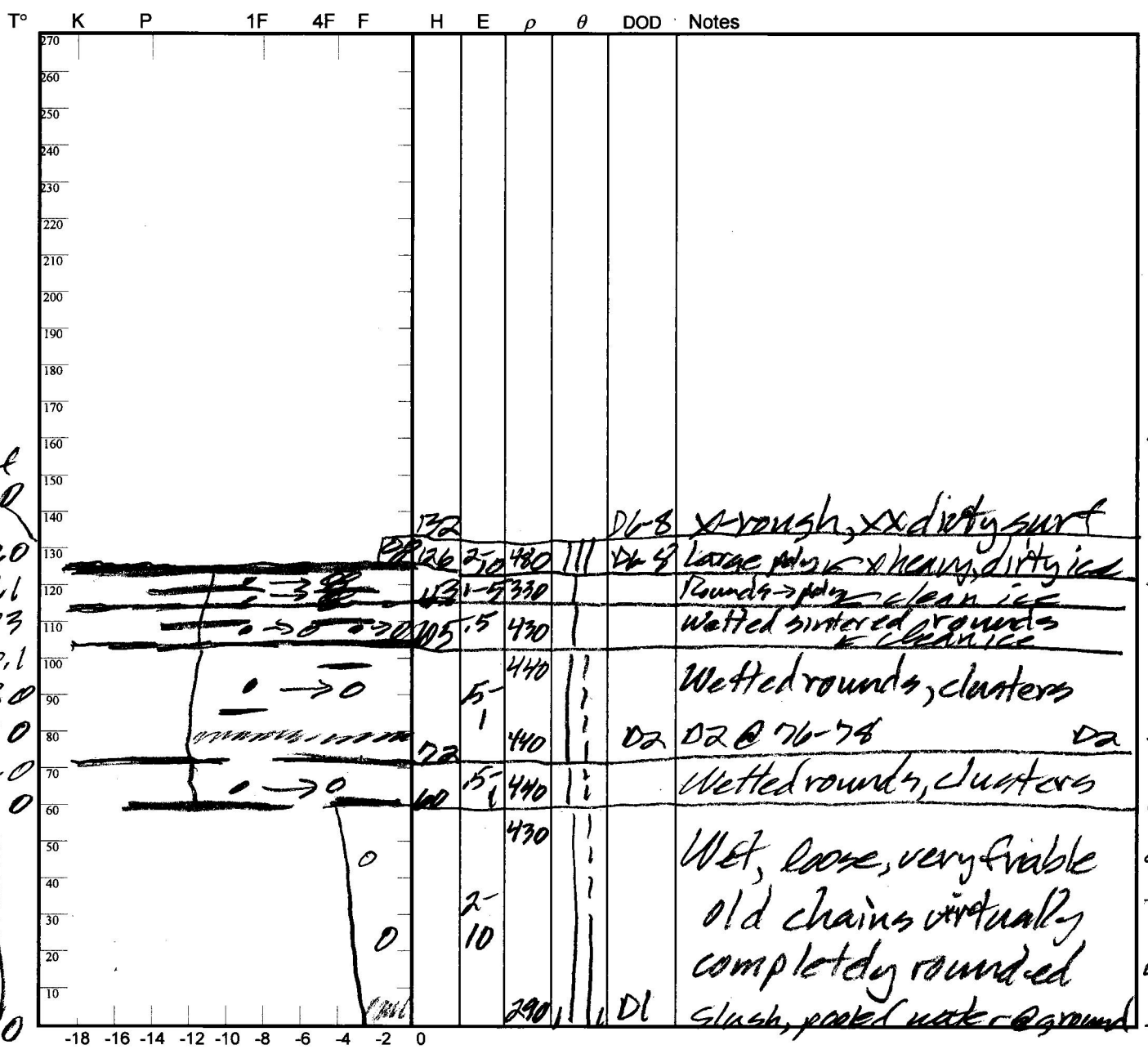
Center for Snow and Avalanche Studies

Profile # 15

Snowpack Profile

Date: 5/5/13

Elev. 11,140' Aspect: NE Boot Pen: 3 cm
 Precip: Nil Wind: lt/Mod Prior Pit: # 17; 4/24/13
 Notes: H_{gt} = 1.28 m; $\bar{\rho}$ = 416 kg/m³



Sawt
 0.2
 0.0
 -1.6
 -0.3
 -0.1
 0.0
 0.0
 0.0
 0.0
 0.0
 0.0

7
 SWE
 19
 73
 71
 64
 90
 91
 125

Potential Slab			Weak Layer & Bed Surface						
Ref	$H_2O_{Nor} \div H_{Nor} = \rho_{kg}$	$\sin \angle \times H_{Nor} \times \rho \times 9.8 = \tau_{Slab}$	F	E	T _{wl}	S	C	RB	Shear Quality
A	mm ÷ m =	X X X 9.8 =							
B	mm ÷ m =	X X X 9.8 =							

Notes: