

Observers: CHAT
 Time: 1325 MST
 Location: SASP
 Air T: +8 °C Sky: ⊕
 Total Snowpack SWE: 999 mm H₂O

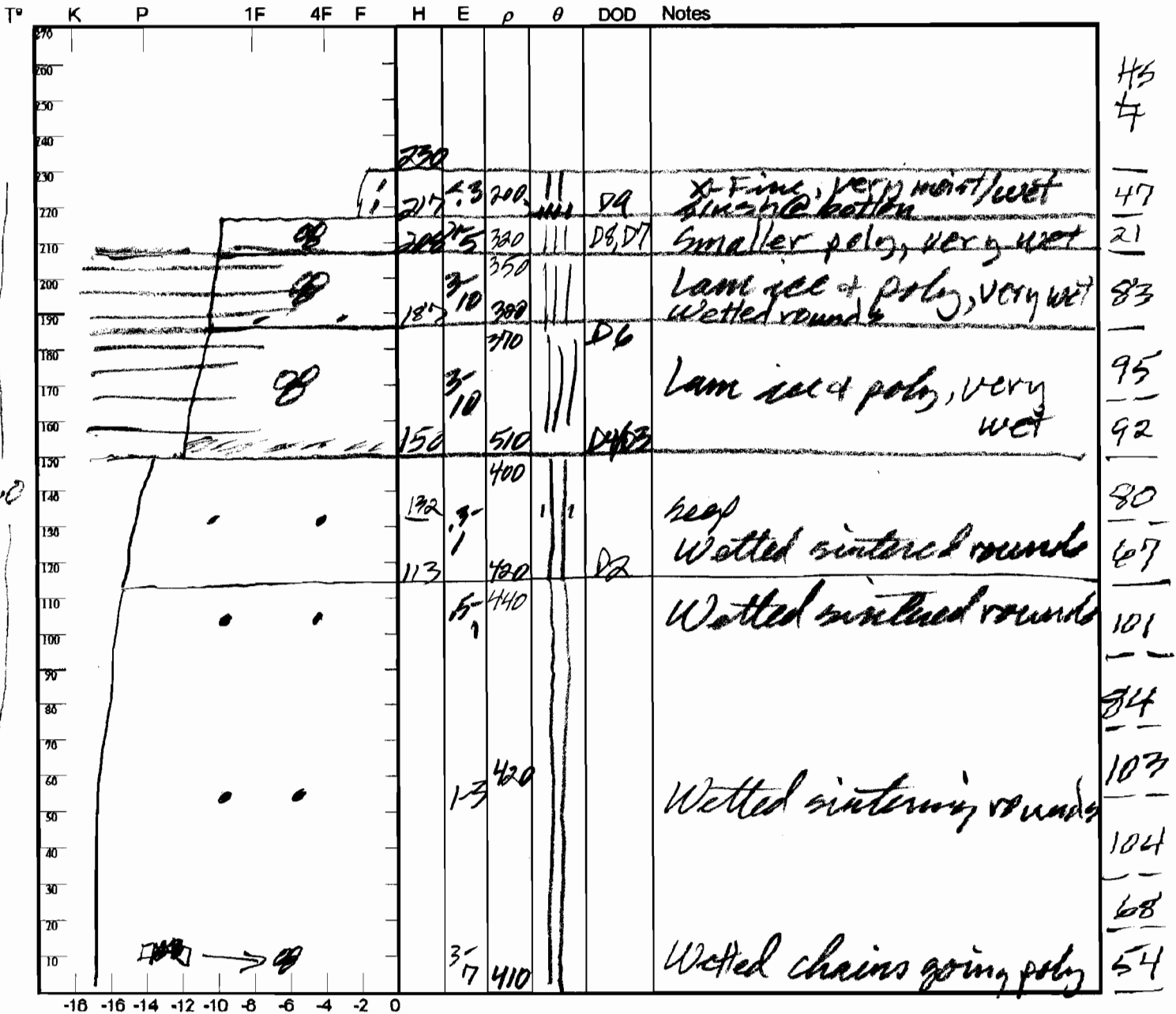
Center for Snow and Avalanche Studies

Profile # 20

Snowpack Profile

Date: 5/23/11

Elev. 11,060' Aspect: NE Boot Pen: 14 cm \angle : 23°
 Precip: S- Wind: L/Mod Prior Pit: # 19; 5/12/11
 Notes: H_{st} = 2.36 m; $\bar{\rho}$ = 423 kg/m³



Potential Slab			Weak Layer & Bed Surface						
Ref	$H_{2O_{Nor}} \div H_{Nor} = \rho_{kg}$	$\sin \angle \times H_{Nor} \times \rho \times 9.8 = \tau_{Slab}$	F	E	T _{WL}	S	C	RB	Shear Quality
A	mm ÷ m =	X X X 9.8 =							
B	mm ÷ m =	X X X 9.8 =							

Notes: