

Observers: CCAT

Center for Snow and Avalanche Studies

Profile # 6

Time: 0945

Snowpack Profile

Date: 3/5/12

Location: SASP

Elev. 11,900

Aspect: NE

Boot Pen: 28 cm

$\alpha$ : 2°

Air T: +3 °C

Sky: 0

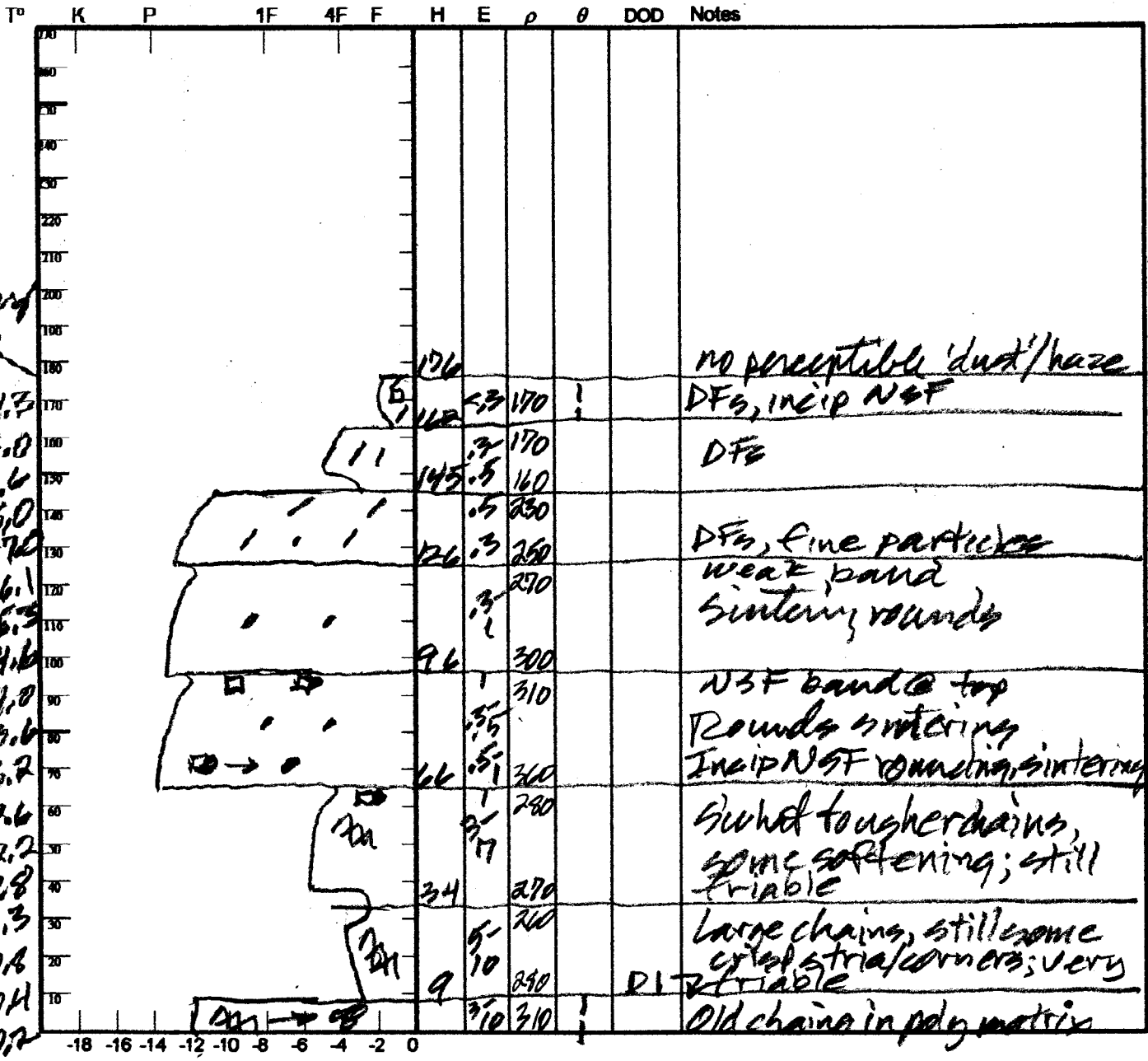
Precip: Nil

Wind: Nil

Prior Pit: # 5; 2/1/12

Total Snowpack SWE: 494 mm H<sub>2</sub>O

Notes: H<sub>2</sub>O = 1.75 ;  $\rho$  = 282 kg/m<sup>3</sup>



Potential Slab			Weak Layer & Bed Surface						
Ref	$H_{2O_{Nor}} \div H_{Nor} = \rho_{10}$	$\sin \angle \times H_{Nor} \times \rho \times 9.8 = \tau_{slab}$	F	E	TWL	S	C	RB	Shear Quality
A	mm ÷ m =	X X X 9.8 =							
B	mm ÷ m =	X X X 9.8 =							

Notes: