

# CSAS Reports WY25

2025-02-26

## Storm 9

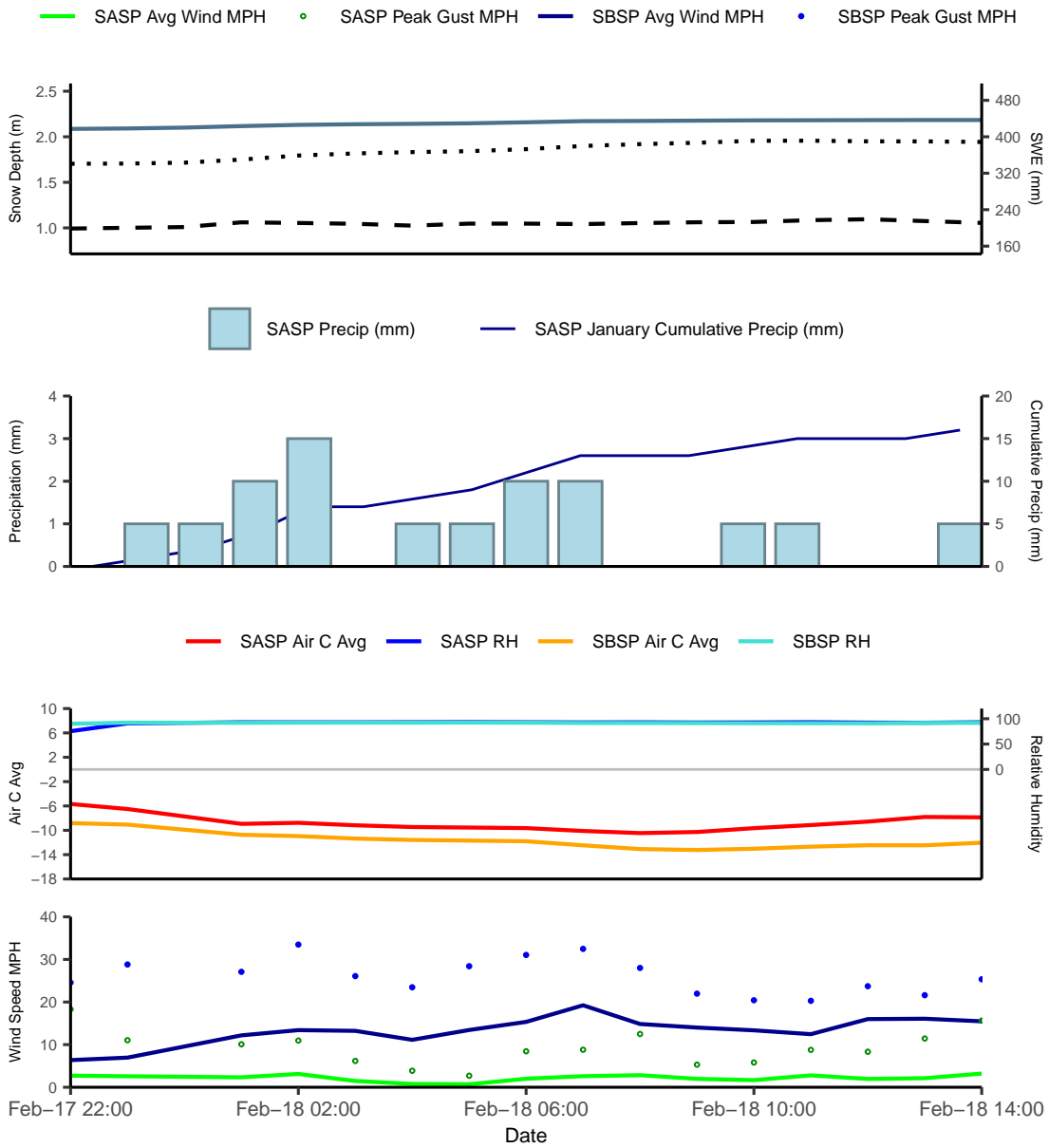


Table 1: Storm Stats

Storm start	2025-02-17 22:00:00
Storm end	2025-02-18 14:00:00
Storm duration (hours)	16
Mean precip intensity (mm/h)	0.94
Max precip intensity (mm/h)	3
SASP accumulated SWE (in)	0.77
SASP accumulated depth (in)	9.41
SBSP accumulated depth (in)	2.44
Peak gust MPH at SBSP	33.5

Table 2: WY25 Storms

	Start	End	tz
Storm 1	2024-10-16 13:00:00	2024-10-20 23:00:00	MST
Storm 2	2024-10-29 04:00:00	2024-10-28 14:00:00	MST
Storm 3	2024-11-05 07:00:00	2024-11-06 10:00:00	MST
Storm 4	2024-11-25 22:00:00	2024-11-27 08:00:00	MST
Storm 5	2024-12-24 18:00:00	2024-12-25 06:00:00	MST
Storm 6	2024-12-26 04:00:00	2024-12-28 03:00:00	MST
Storm 7	2025-01-04 07:00:00	2025-01-05 04:00:00	MST
Storm 8	2025-02-13 09:00:00	2025-02-15 15:00:00	MST
Storm 9	2025-02-17 22:00:00	2025-02-18 14:00:00	MST

Swamp Angel Study Plot (SASP) is at 11,060' and Senator Beck Study Plot (SBSP) is at 12,186'.